

SELF MODULAR

Ruggedized and secure configurations,
built for outdoor and intensive use cases



- ▶ Accept all payment types and comply with the latest standards
- ▶ Fit into any existing kiosk thanks to its dual form factors
- ▶ Prevent vandalism and fraud with this highly secure solution
- ▶ Provide a user-friendly experience anywhere, anytime
- ▶ Address any self-service vertical market

The Self Modular configuration allows easy and secure integration of cashless payment into self-service businesses, while providing a simple consumer experience through an easy-to-use interface

Ruggedized

Built for outdoor kiosks and designed for intensive use cases, the self modular is shock and vandalism resistant (IK10 for Self/8000, IK10+ for Self/7000), waterproof (IP65 for Self/8000) and water & dust resistant (IP44 with water evacuation for Self/7000).

Secure

Self Modular is the first self-service configuration to be PCI PTS v6 certified. The in-house hybrid reader entry mouth is secured by RGB LEDs, metallic shutter and a sensor. The PIN entry device includes a presence detector to detect skimmer insertion. Multiple patents contribute to the overall device security.

User friendly

Using the Self Modular has never been easier than to its color display (adjustable lightness according ambient luminosity), its presence detector to automatically light up the keyboard for night time use, card reader LEDs to allow for easier card insertion, and its ability to play WAV files for better voice assisted guidance.

Connected

Self/7000 embeds a full set of connectors (USB, Serial, Sound, LAN...) to support multiple use cases. In addition, the optional add-on boxes (already available with the Self all-in-one terminals) can extend the terminal capabilities with MDB connectors or wireless connectivity (Bluetooth, 4G).

Universal

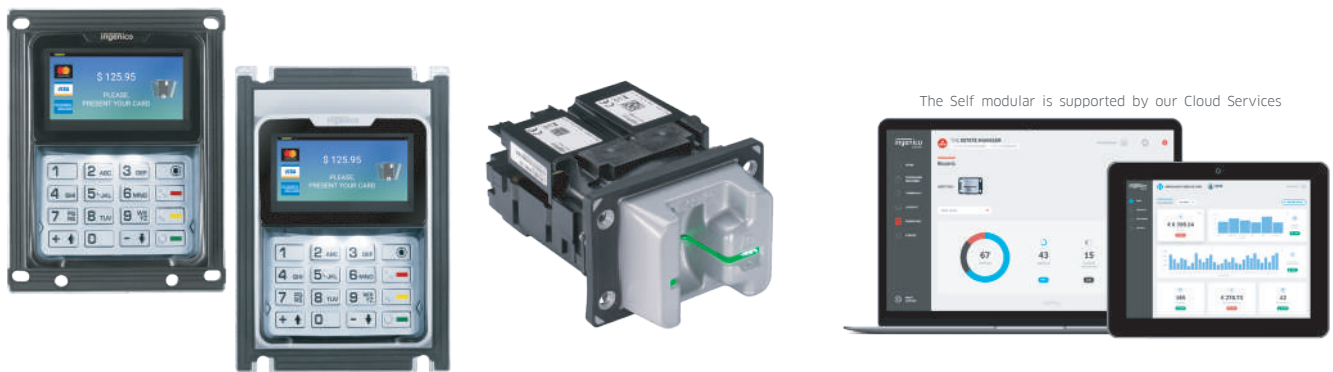
The Self Modular fits into any existing kiosk. The Self/8000 is compliant with EVA EPSv2 and provides an easy upgrade path from the iUP250. The Self/8000 with the alternative form factor will be able to replace competitive legacy configurations. Self Modular ensures sustainability and scalability for any kiosk.

Scalable

The optional add-on boxes work on any Self Family terminal (all-in-one, modular) and allows customers to extend their configuration capabilities based on their needs making the devices future proof. For example, a 5G add-on box is planned in the coming years.

Cost-efficiency

Packing a full feature set into a cost efficient design is the goal of the Self Modular. Thanks to its PCI v6 certification, commissioning and removal switches for development purposes are no longer required. With its modular design of two devices (versus 3 historically) the overall integration and ownership costs are decreased. The Self Modular is part of the TETRA family, allowing the use of existing Tetra applications and the full suite of software development tools available as part of the platform.



The Self modular is supported by our Cloud Services

	SELF/8000	SELF/7000
Processor / OS	• Cortex M33 32 bits 160 Mhz (U5) / TETRA	• Cortex M33 32 bits 160 Mhz (U5) / TETRA
Memory	• 786 KB SRAM / 2 MB Flash	• 512 MB Flash, 512 MB RAM • MicroSD up to 32GB
SAM		• 2xSAM ID-000
Contactless reader	• EMV 3.0 Level 1 compliant / ISO 14443 A/B/B'	
Contact reader		• EMV Level 1 / 500k reads lifespan • ISO 1/2/3, 500k reads lifespan • RGB backlit LEDs (anti-skimming)
Display	• 2.5" (320x160) IPS color display (262k colors) • Automatic adjustable light intensity by software and sensor	
Keypad	• 16 metallic keys with RGB keyboard illumination • Wake up / Ignition by presence detection	
Audio	• Buzzer Monotone	• Buzzer Monotone + polyphonic sound (external speaker)
Terminal connections		• 1x USB Slave (USB-B) • 2x USB Host (USB-A) • 2x RS232 (1x RJ11 + 1x JST) • 1x MDB Master + 1 x MDB Slave (optional add-on box)

	SELF/8000	SELF/7000
Terminal connectivity		• 1 x RJ 45 LAN • 4G (EU/NAR/AUS/JPN) + Bluetooth 4.2 BLE (optional)
Power supply	• 5.5V (thru self/7000)	• 9-16 V DC • 10-45V DC with optional Add-on box
IP	• IP 65	• IP 44
IK	• IK 10	• IK 10+
Terminal size	• EVA EPS v2 - Standard Door Module (SDM): • 100 (W) x 131.3 (H) x 40.7 (D) mm (3.9x5.2x1.6") • 86.4 x 108.71 mm (3.4x4.3") • Other form factor (compliant with ART form factor): • 100 (W) x 142.6 (H) x 40.7 (D) mm (3.9x5.6x1.6") • 82.2 x 120.2 mm (3.2x4.7")	• EVA EPS v2: • 107 (W) x 73 (H) x 151.1 (D) mm (4.2x2.9x5.9") • 74 x 62 mm (2.9x2.4")
Weight	• 963 g (34 oz)	• 825 g (29 oz)
Environment	• -20°C to +70°C (-4°F to 158°F) - Operating • -20°C to +70°C (-4°F to 158°F) - Storage • 95% non-condensing at +55°C (131°F)	
Security	• PCI PTS 6.x certified	



Distributore ufficiale Italia:
Payprint Srl
V. Monti 115 - 41023 Modena
Tel. 059.826627 - www.payprint.it

