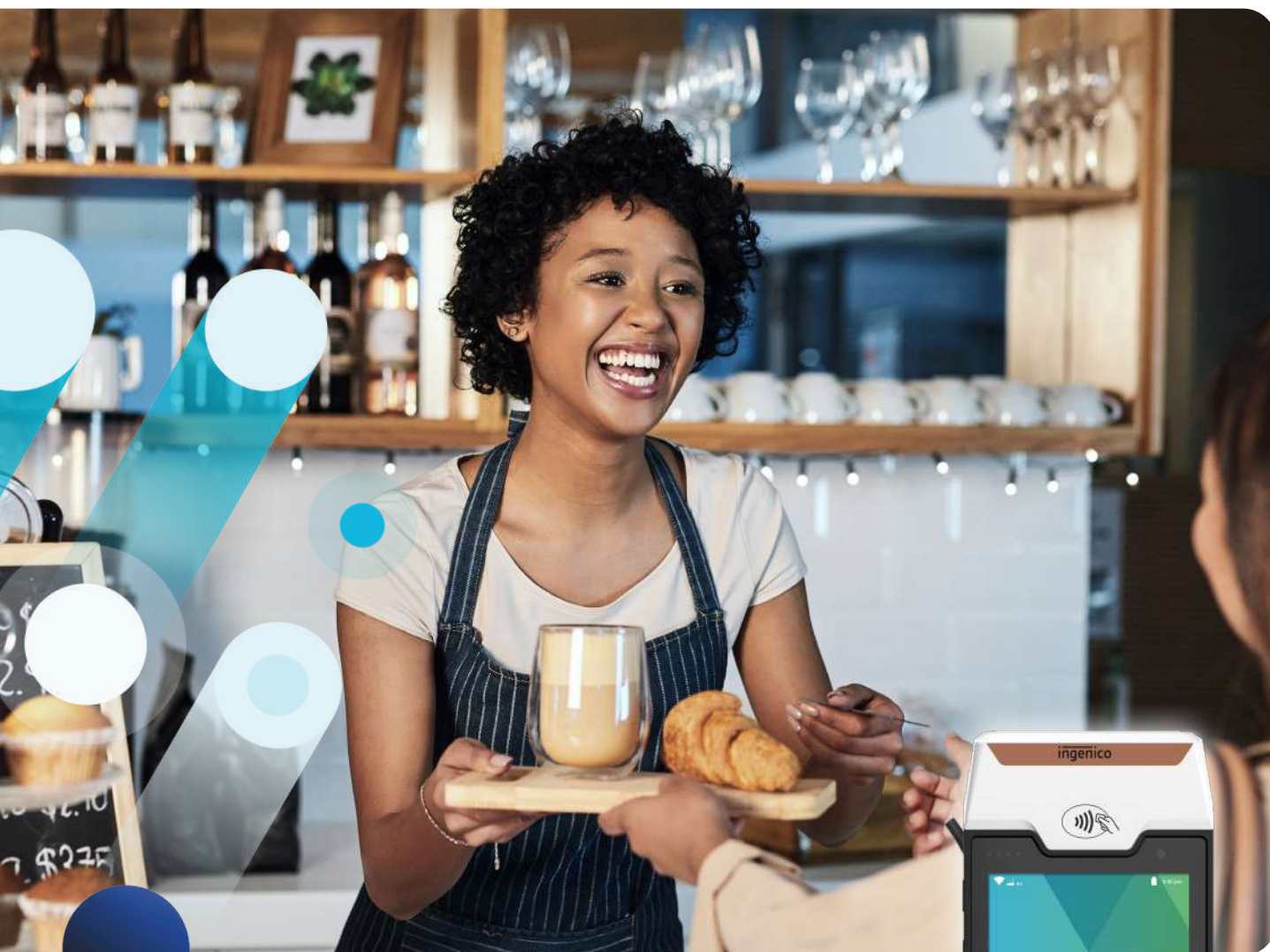


AXIUM DX4000 Desktop

Exceeding expectations at the counter



- Fresh business opportunities with leading-edge Android apps under Android 10
- Seamless integration at counter thanks to its compact size and wide range of wired connectivity
- Ensure business continuity with power buffer
- Top-level security with Android & PCI PTS V6 compliancy
- Supported by Ingenico Services for an optimized efficiency in estate and security management





Whether accept payments at counter or focus on more advanced capabilities, the AXIUM DX4000 makes it possible.

The power of Android 10. Harness the power of the Appstore.

Maximized network availability

- Wi-Fi, Bluetooth and optional 4G
- Optional Ethernet through MagicBox
- Battery back-up to cover power loss

Seamless integration at counter

- All-in-one compact device
- Optional MagicBox offering various wired connectivity

Raising the bar on security with PCI PTS v6 and Ingenico security tools

Fast integrated printer

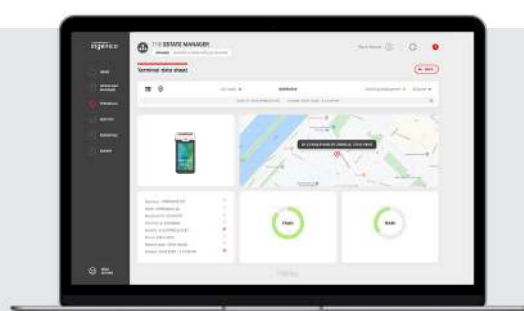
Optimized checkout time

- EMV Chip & PIN, contactless, magstripe or digital wallets
- Multiple alternative payment methods supported thanks to front camera
- Highlighted contactless zone

Fully outsourcing of terminal's life cycle management with TaaS package

Supported by Ingenico's suite of services

- Fleet management & security solutions
- Hardware services
- Professional services



OS	• Android	• Android 10 Security OS	✓
Memory	• Internal	• 8GB Flash 1GB RAM • 16GB Flash 2GB RAM	✓
	• External	• MicroSD Card slot	Option ✓
Processor	• Application processor	• 64-bit ARM, Cortex Quad-core A53, 1.3GHz	✓
	• Crypto processor	• 32-bit ARM, security core SC300, 192MHz	✓
Card readers	• Magnetic card reader	• Support ISO 1/2/3 track data, bi-directional swiping	✓
	• Smart card reader	• EMV L1 and ISO7816 spec compliant	✓
	• NFC/contactless	• EMV Contactless L1 3.1 spec compliant; support ISO / IEC 14443 Type A / B	✓
SAM /SIM slots	• 3 slots (SAM + SIM)	• 3 SAM • 2 SIM + 1 SAM • 1 SIM + 2 SAM	Option ✓ Option ✓
Display	• Color / capacitive multi-touch	• 5", 854 × 480 px	✓
Printer	• Integrated thermal printer	• Diameter: 40mm	✓
Keys & Keypad	• Power key & volumes keys	• 1 Power key & 2 volumes keys	✓
	• Capacitive screen keys	• Physical screen keys: Menu, Home, Back	✓

Audio	• Speaker	• Internal speaker	✓
	• Buzzer	• Internal buzzer	✓
	• Microphone	• Internal microphone	Option ✓
Connectivity	• WAN	• 4G* fallback 3G and GPRS	Option ✓
	• LAN	• Bluetooth 4.2 support low energy	✓
		• WiFi IEEE8.2.11 a/b/g/n/ac, 2.4GHz and 5GHz	✓
Connections	• USB	• USB Type C	✓
Data capture	• Positioning**	• Tracking GPS, GLONASS, BEIDOU	Option ✓
	• Front camera	• 0.3MP, fixed focus, code scanning	✓
Battery	• Li-ion	• 2200mAh / 7.2V, 15.8Wh (equal to 4270mAh / 3.7V)	✓
MagicBox	• Ports	• Ethernet, USB Host, USB device, USB C	Option ✓
Size	• Terminal only	• 177.6 × 80 × 56.8 mm (6.63 × 3.15 × 2.15")	✓
Weight	• Terminal + battery	• 435g (15.34oz)	✓
Security	• PCI PTS V6		✓
Environment	• Operating Temperature	• -10°C to +50°C (14°F to 122°F)	✓
	• Storage Temperature	• -20°C to +70°C (-4°F to 158°F)	✓
	• Operating Humidity	• 10% to 90% non-condensing	✓

*depending countries
** With 4G version only

